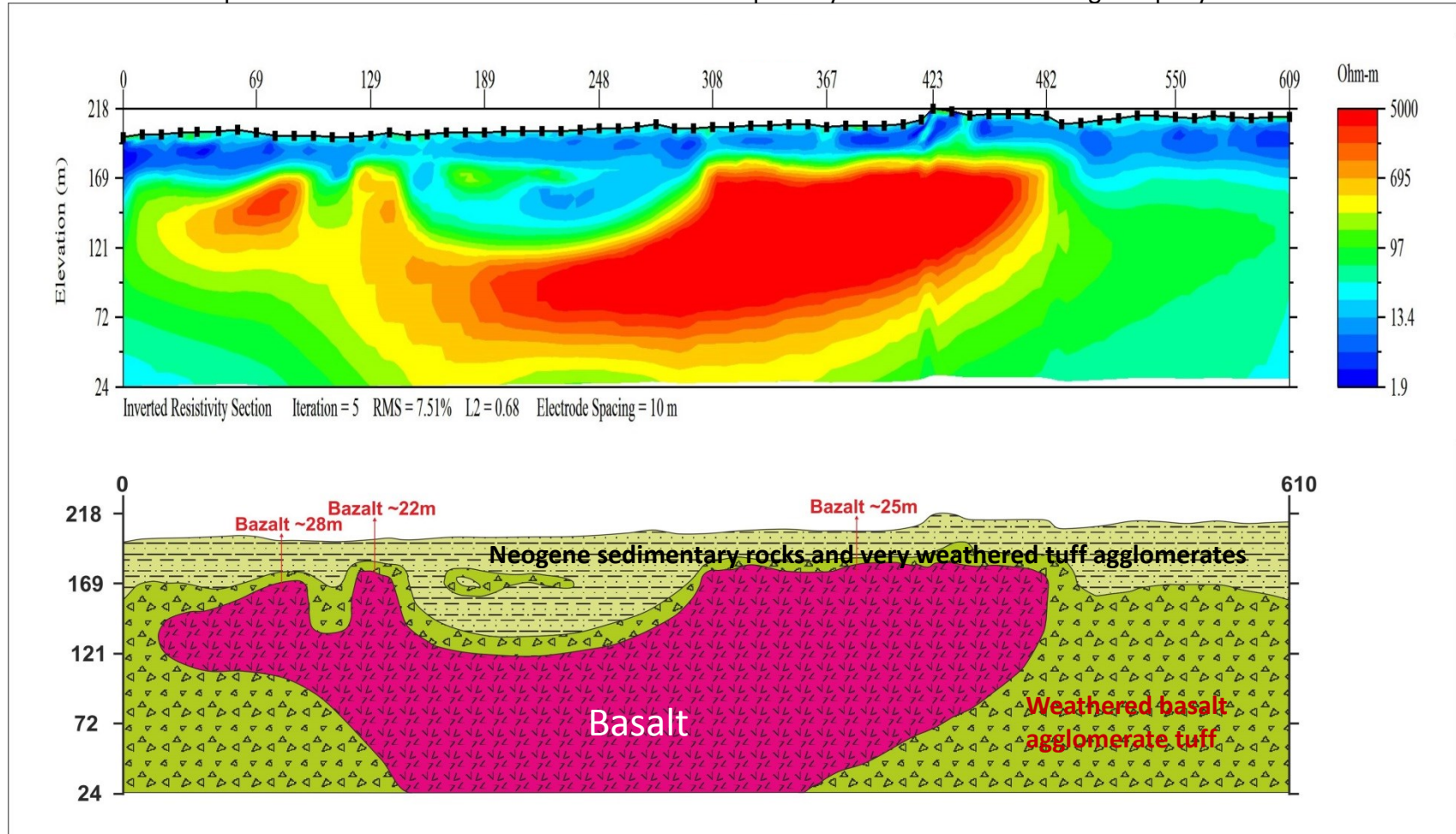
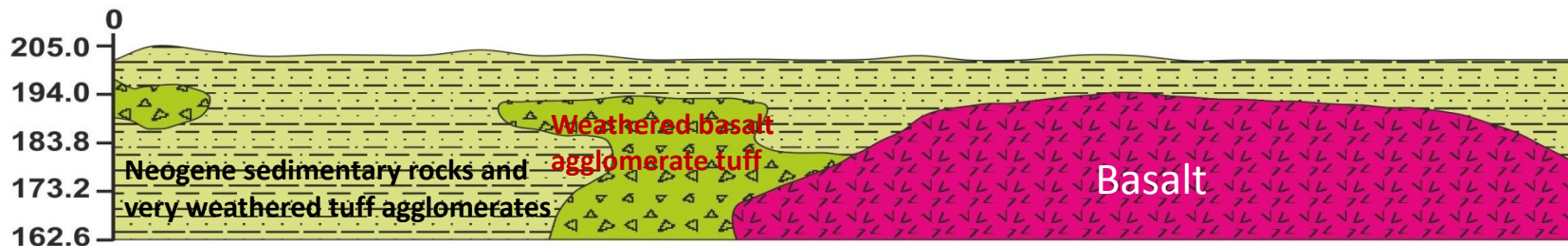
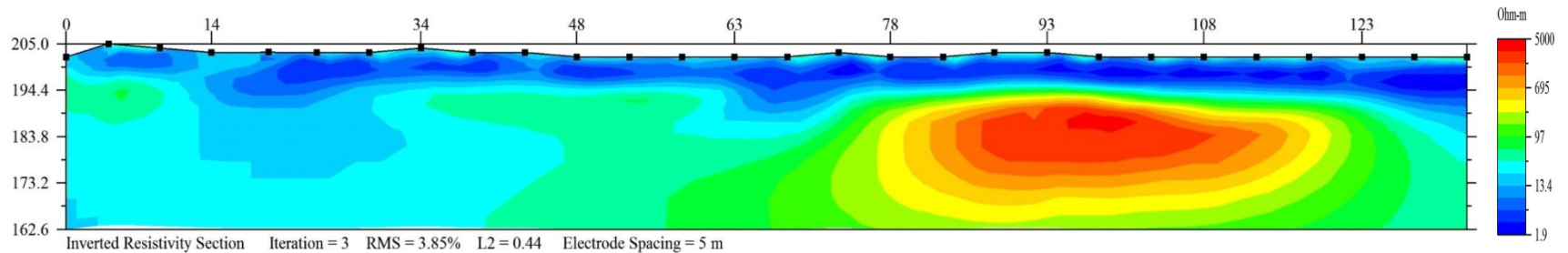


Basalt Site Characterization

Study was to determine existing and new alternative basalt zones at an existing basalt mining site. AGI SuperSting R8/IP instrument with 84 electrodes at 10 and 5 electrode spacing are used with dipole-gradient array. EarthImager 2D was used for data processing and inverse modeling. The vertical and lateral limits of Basalt zones are successfully mapped. The ground truth has realized at drilling points up to 40m depth. The drilling results confirms that the altered basalt zone is located between 28 and 32 m and after 32m depth entered non-altered basalt zone which was primary interest of local mining company.



Basalt Site Characterization



Objective : Basalt Site characterization
Survey site: Turkey
Instrument: SuperSting R8/IP/SP, 28 electrodes at 5 m spacing, using dipole- gradient array
Software : EarthImager 2D



Data courtesy of Ali Karan, YGH MÜHENDİSLİK LTD. ŞTİ

www.alikaran.com