

Radarteam GPR Antennas

SUBECHO-40 MHz

Maximum Penetration Depth GPR-Antenna



APPLICATIONS:

- Deep geological/ geotechnical surveys.
- Groundwater resource prospecting
- Bedrock profiling, fracture/ karst detection
- Sand & gravel deposit surveys
- Deep Glaciological & Ice sheet mapping.
- Environmental investigations.
- Mapping of water- and sediment depth.
- Mining & quarrying applications
- Mapping extension of mineralization areas.
- Archaeological tunnel/chambers detection
- Embankment dam safety. Voids and construction control.

FEATURES:

- Both airborne and ground coupled operation
- Ultra Wide Band, UWB-performance
- Depth Range: 1–40 meter
- Bistatic & monostatic operation
- Rugged, UV resistant ABS, -30°C to 70°C
- Light Weight, 5 kg. Size: 204 x 15 x 21 cm
- GSSI compatible Plug-In electronics

Radarteam Sweden AB

Gränsvägen 51, S-961 37 Boden, Sweden.

Info Brazil Tel: 21 2556-1295 www.alphageofisica.com.br



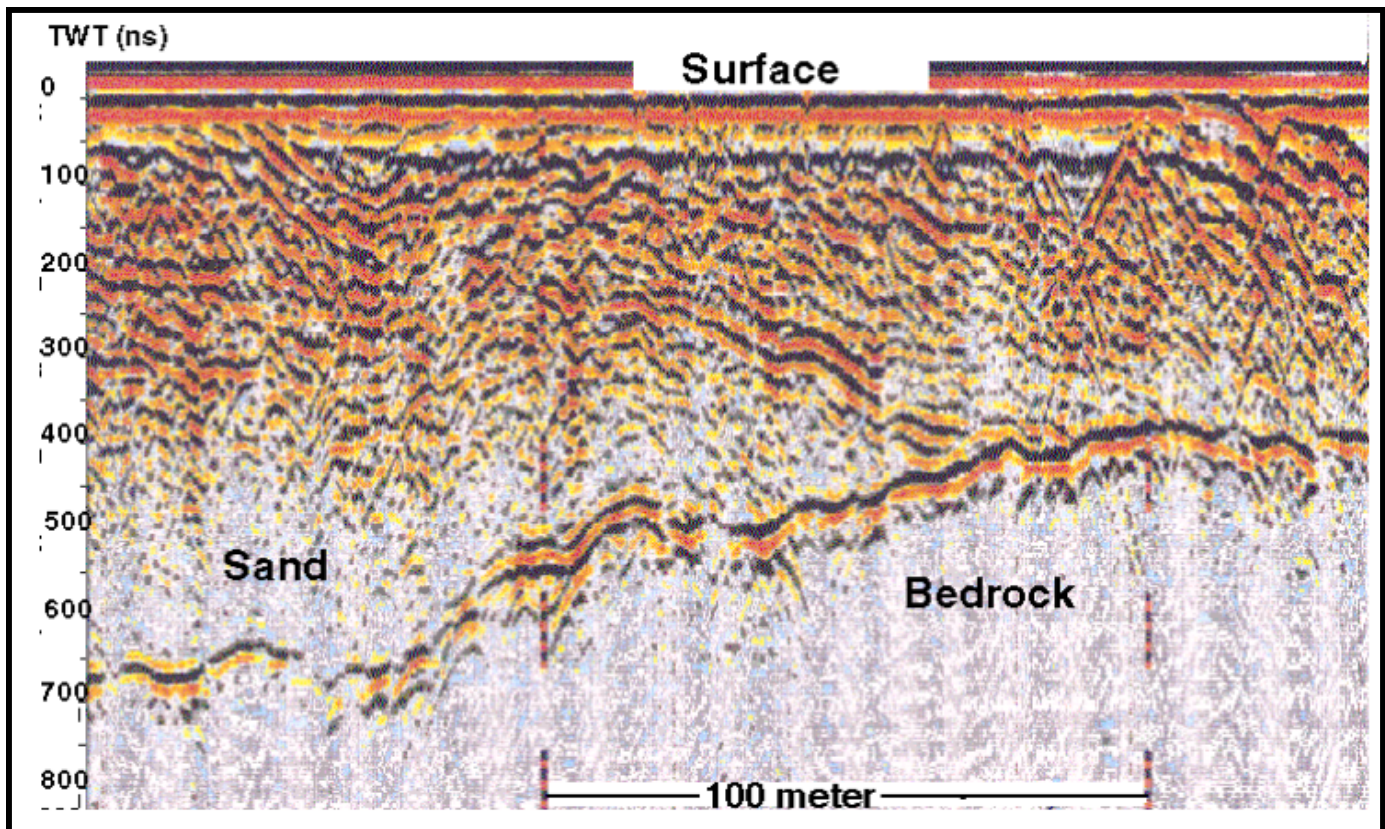
Configuration Accessories for Rough Terrain:

- SACC1 Carrying Harness
- Digital Belt String SW-encoder & Monostatic Handle
- Carrying Frame, bistatic configuration



Configuration Accessories for Flat Terrain:

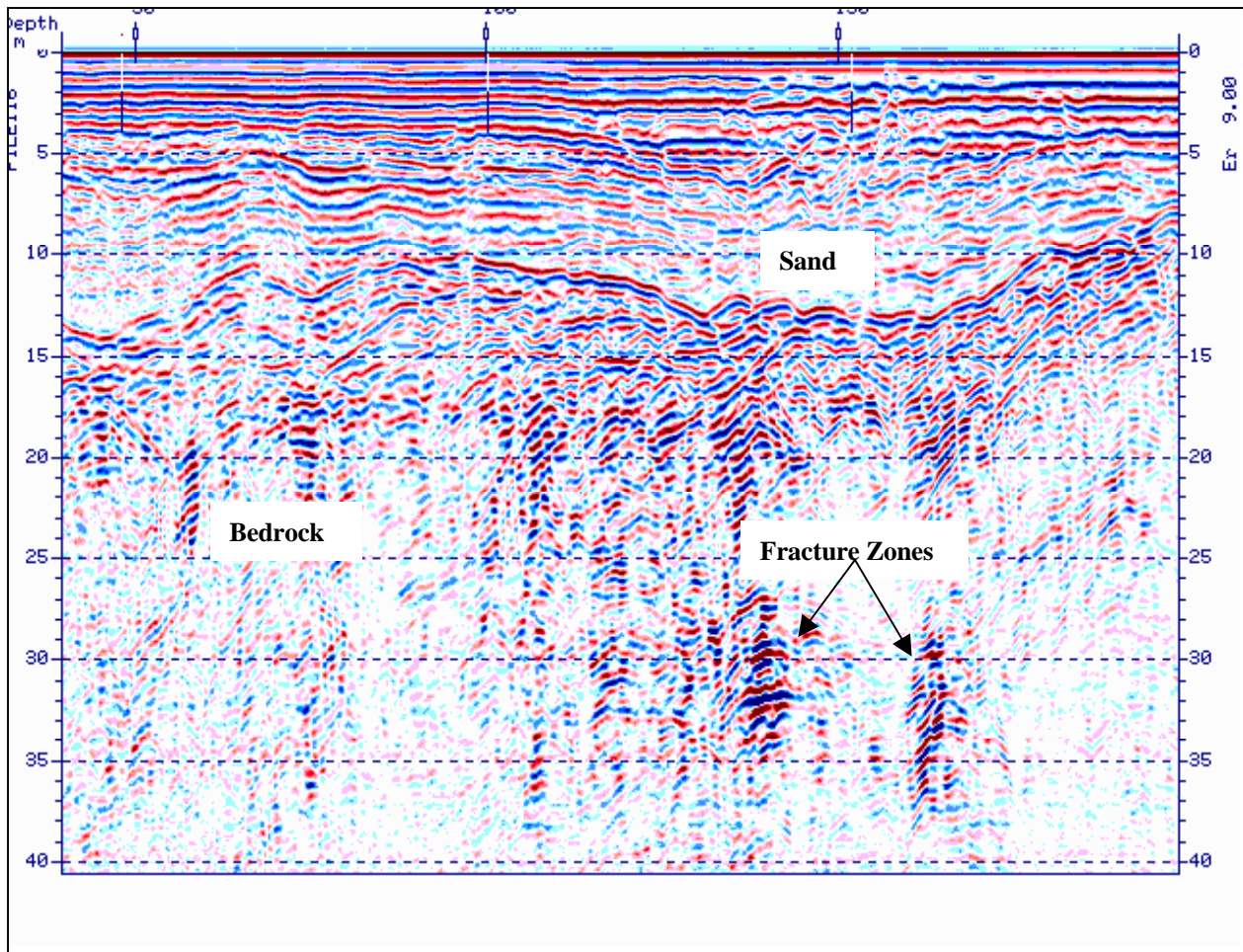
- Trailer CAR-Kit with SW-encoder, both mono- and bistatic
- GPR MultiCart including SW-encoder for all our antennas



SUBECHO-40 MHz

Ground Probing Radar Antenna Samples

Fracture Zones in Bedrock. 1000 ns.

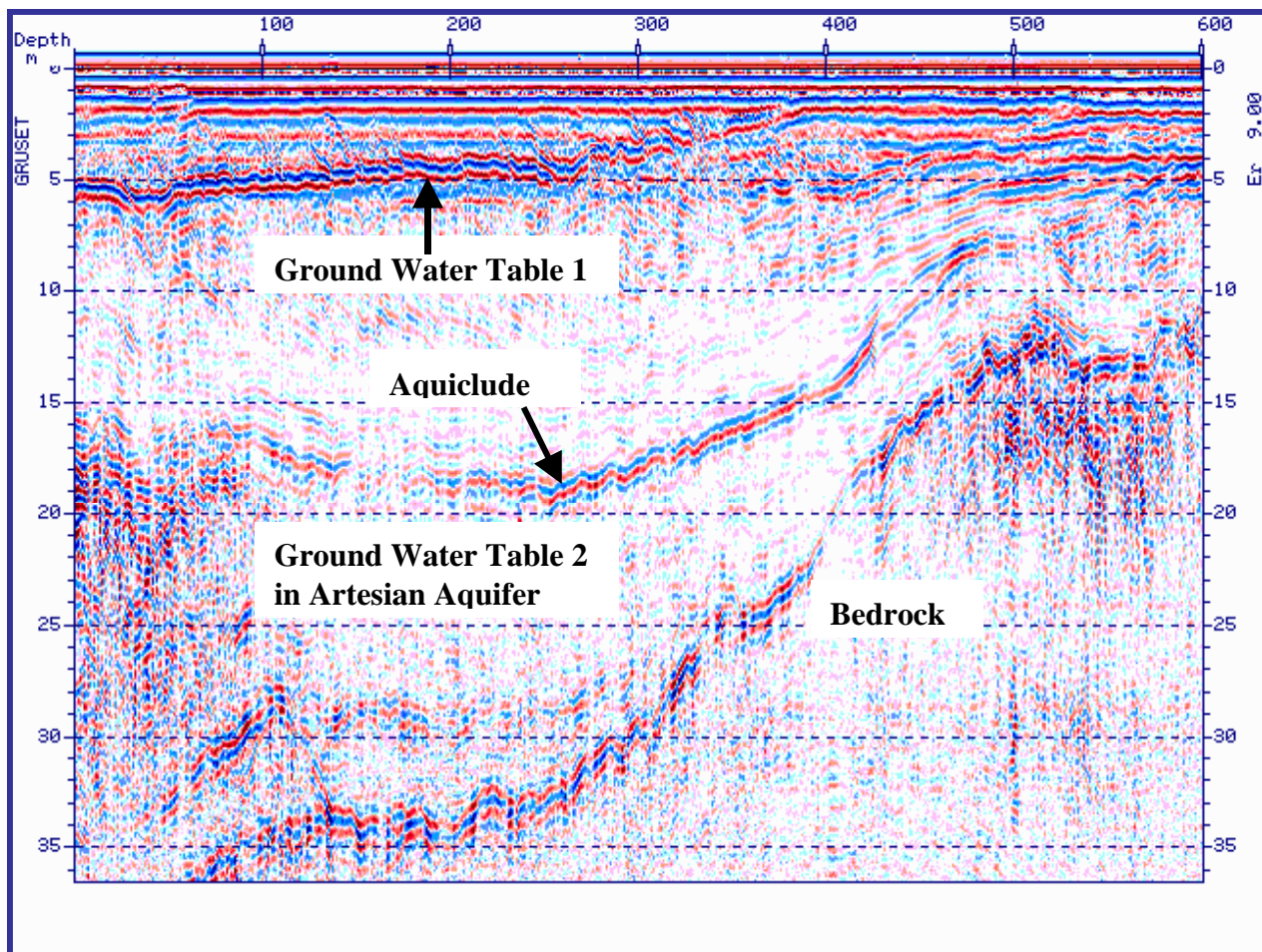


*Fracture zones in granite bedrock. Fractures are believed to originate from postglacial seismic activity. Up/down movement of sand layers above fractures. (See SE-70 Antenna)
Radarteam Sweden AB:s Field Test Site in Boden, Sweden*

SUBECHO-40 MHz

Ground Probing Radar Antenna Samples

Ground Water Resource Survey



This 600 m long GPR profile present a typical Ground Water Survey in glacio-fluvial material Sample shows an aquifer with 2 known ground water tables, visible at 100 and 400 ns, 5 and 20m. Bedrock is clearly visible up to full 900 ns range. With a dielectric of 9, depth range is 40 m. The SE-40 Antenna was used in monostatic mode, winch mounted above ground.