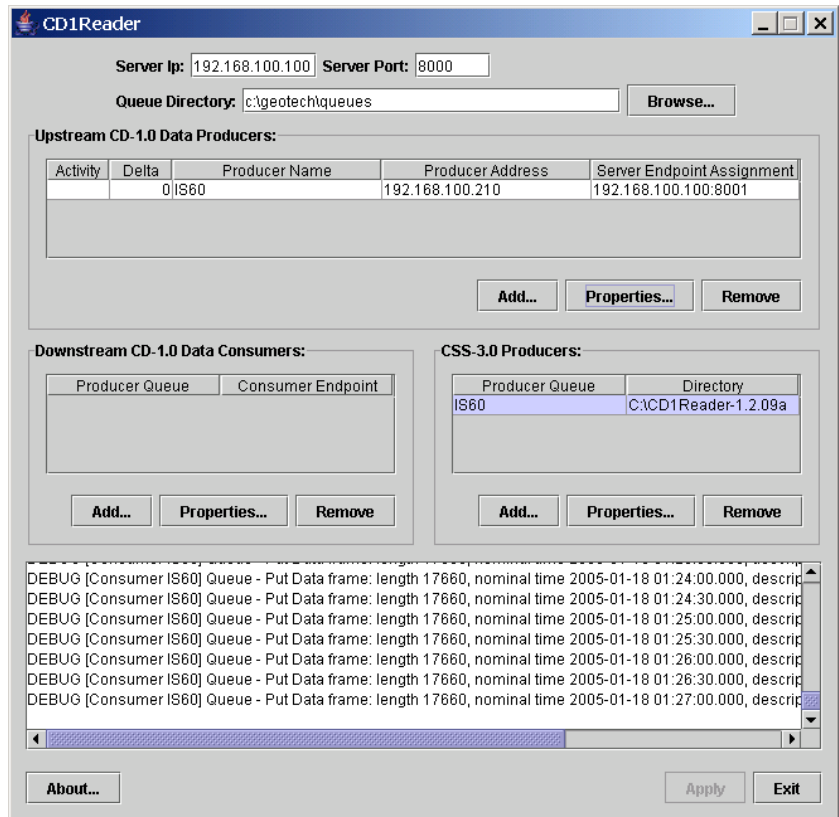


## FEATURES

- Easy operation
- Java application
- Receives and sends CD1.0 data streams, converts into CD1.1, and writes CSS3.0 data files

**CD1Reader** is a multi-threaded CD1.0 data server/client for real-time operation. It is International Data Center formats and protocols compliant, and has the capability to receive multiple CD1.0 data streams from remote stations and queue data for several days/weeks. It may be configured to generate Center for Seismic Studies CSS3.0 flat data files, forward CD1.0 data streams to multiple Consumers, and optionally forward CD1.1 data streams to multiple Consumers, as well as to itself.

## CD1Reader Server/Client



# CD1Reader DIALOG BOXES

CD1.0 Producer Properties Dialog Box:

**Producer Properties - CD1Reader** [X]

CD-1.0 Producer Name:

CD-1.0 Producer Address:

Assign Server Address:

Assign Server Port:

Frame Queue:

Oldest Data: 2005-01-17 16:30:00.000  
 Newest Data: 2005-01-17 20:51:30.000  
 Current size: 20564026 bytes

Purge Interval:  Days

Purge Threshold:  Days

The Consumer Properties Dialog Box:

**Consumer Properties - CD1Reader** [X]

CD-1.0 Producer Queue:

Consumer Address:

Consumer Port:

Timeout and Connection Parameters:

Connection Request (sec):

Port Assignment (sec):

Reconnection (sec):

General I/O (sec):

Retry Interval (sec):

Minimum Frame Interval (ms):

Frames resent on Connection:

Start 'Caught Up'

Convert to CD 1.1

CSS3.0 Producer Dialog Box:

**CSS Producer Properties - CD1Reader** [X]

CD-1.0 Producer Queue:

Database Directory:

CSS-3.0 Parameters:

Segment Length:  Hours

Time Discontinuity: +/-  \* Sampling Period

Days of Data to Retain:  (0=All)

Database Name Format:

Waveform Filename Format:

*Format Specifiers: %A-Array (Producer) Identifier, %S-Station Identifier, %C-Channel Identifier, %y-Year, %d-Day of Year, %M-Month, %D-Day of Month, %h-Hour, %m-Minute, %s-Second.*