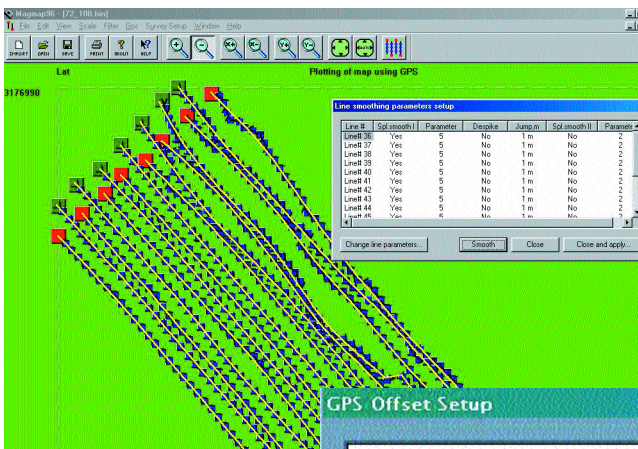
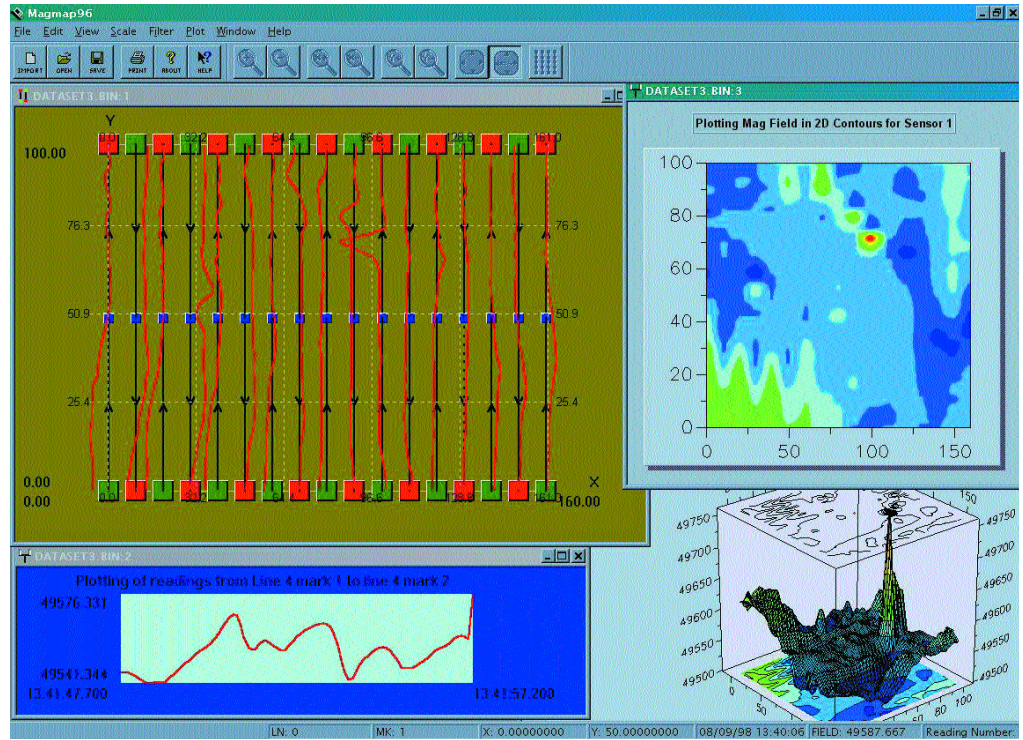


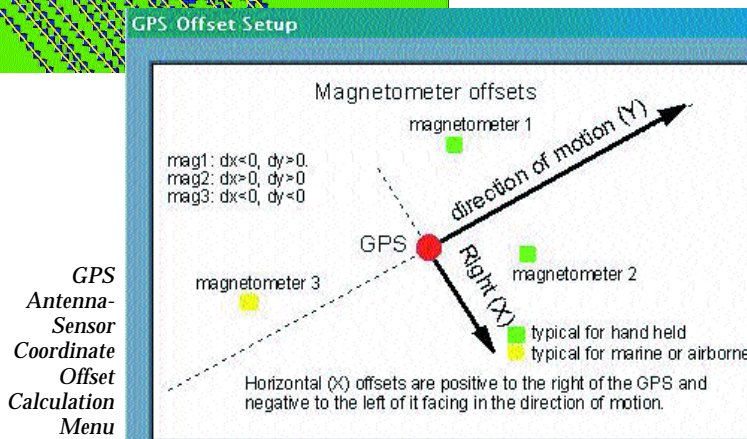


MagMap 2000

- Powerful Windows Program for Processing Land-Marine Mag, OhmMapper, MetalMapper, EM61 Data
- Provides Download, Diurnal Correction, Repositioning and Profile Plots
- Full GPS Support with UTM Conversion AND Sensor-GPS Antenna Offset Computation
- Performs Sensor Data AND GPS Position Filtering, Despiking, Smoothing
- Plots Profile Data Right on Track or Position!
- Generates 2D/3D Color Contour Plots and Shaded Relief Maps



GPS Position Trackplot Smoothing Feature



GPS Antenna-Sensor Coordinate Offset Calculation Menu

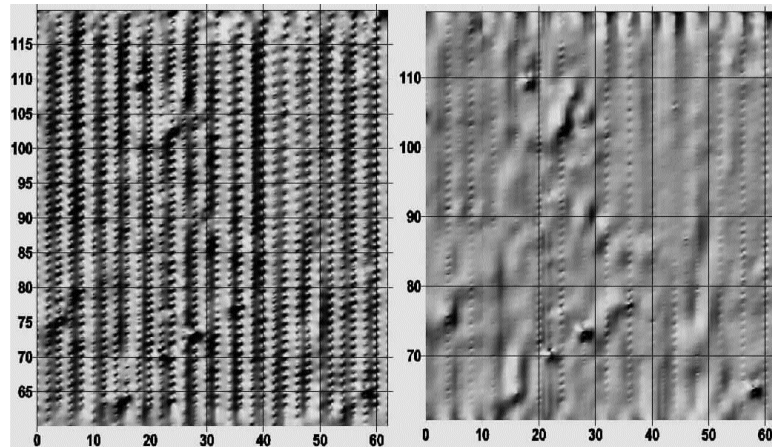
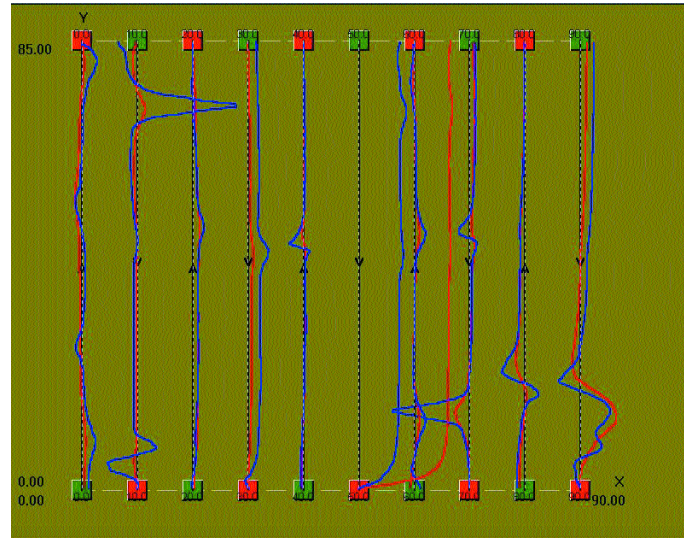
Geometrics legendary "free" magnetometer support software just became more powerful and feature rich. As the new name symbolizes, we have added more facility for correcting, filtering, repositioning and plotting magnetometer data as well as OhmMapper, MetalMapper and EM61 data to support our customers in 2000 and beyond. In addition, we now offer a new feature that provides easy-to-use destriping (removal of heading error) and period filtering along the line (stride noise removal). These algorithms provide unparalleled control and automation in processing high sensitivity land and marine magnetometer data.

Recent improvements include one-button color contour equalization for more representative contour maps and a shaded relief map feature which heightens detection of small anomalies while suppressing long wavelength geologic features.

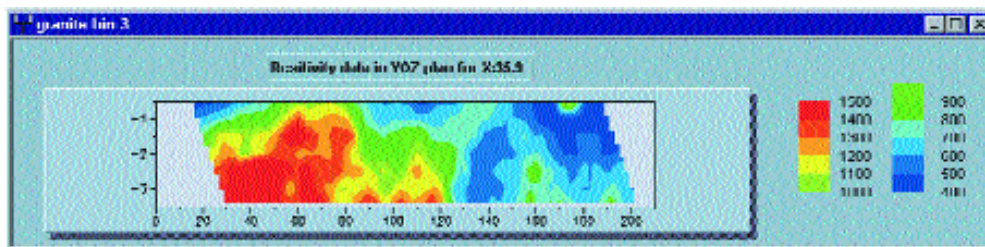
MagMap2000 provides data handling capabilities for the entire suite of Geometrics man-portable magnetic and electromagnetic equipment including the OhmMapper Resistivity system and new GTEM Metal-Mapper which uses time-domain metal-detector technology. In addition, its unique features may be used with other instruments such as the Geonics EM61 and GSSI GEM300 or almost any ASCII columnar data in x, y (Lat-Long), z format using the new data import routine. Powerful GPS support allows the user to smooth the GPS path, remove position spikes, transform the data into UTM coordinates using various ellipsoid datum **and add offsets between the GPS antenna and magnetometer or other sensors!** This provides data sets which are free of positional “tears” and less linear feature distortion in the final map. The program exports in Surfer, Geosoft, RES2D/3DINV and as standard ASCII x, y, z file formats.

MagMap Software is available for immediate download from our website — www.geometrics.com. If you are using a Geometrics G-856, G-858, OhmMapper, MagSea, MagLogNT or MagLogLite hardware or software product, please obtain the latest version now. You will be pleased that Geometrics continues to support our large customer base with the very latest in application support **at no charge**.

Dual
Magnetometer
Vertical
Gradiometer
Profiles



Results of
Destriping
and
Periodic
Noise
Removal
Feature



MagMap2000 display of resistivity pseudosection from OhmMapper TR1 data

Brazil
www.alphageofisica.com.br

