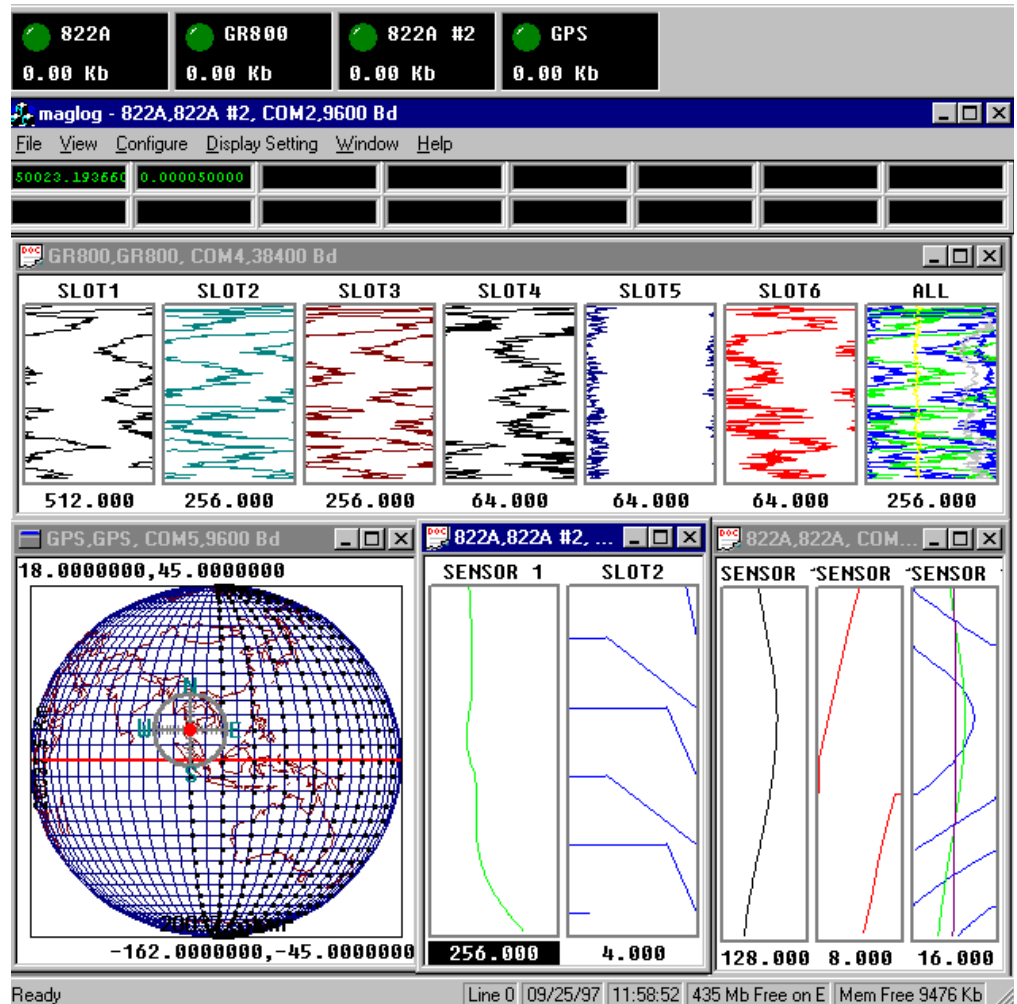




# MagLog NT - Data Logger and System Controller

- **Airborne, Marine and Vehicle applications with Multi-Sensor Analog and Digital Logging**
- **Integrated GPS Trackplot**
- **Runs on Windows NT 4.0 (airborne) or Windows 98 (marine applications), Multi-Threaded Multi-tasking operating system**
- **Provides up to 32 Analog Channel input, 10 Serial port input, Parallel and Special Gamma Ray & Positioning Interfaces**
- **Real-time diagnostics performed on all data inputs, providing immediate feedback if data is not being transmitted, is out of range or fails other quality criteria.**
- **Geometrics offers complete turnkey systems including Birds, Stingers, Wingtip installation accessories as well as complete Digital Data Acquisition Systems, Flight Path Recovery, GPS Navigation, Gamma Ray Spectrometers, VLF EM and Post Acquisition Data Processing Software and training.**



MagLogNT offers a sophisticated multi-tasking operating system combined with superior data handling capabilities for logging, displaying and printing multi-channel asynchronous data transmissions. MagLogNT provides the ability to configure multiple re-sizeable display channels each with their own horizontal and vertical scale parameters with multiple color coded traces in each window channel.

Special transmission formats are easily accommodated. Currently, formats for the RMS AADCII, G-822A Super-Counter, CM-201 Mini-counter, GPS NMEA 0183, GR800 and GR-820 Gamma Ray Spectrometers, ORE Trackpoint II and Gyro are implemented. GO-NO GO warning lights at the top of the display alert the operator to any error conditions or data which exceeds preset conditions.

A special GPS window is included which shows the real-time position with complete zoom controls and plot of survey track. Maps may be imported as ArcInfo Shape Files for background reference on the GPS track plot. All information is available to be output to a rack-mount thermal or dot matrix printer for real-time hard copy. Data from all analog and digital channels are logged to disk and time-stamped to within 10 ms. Geometrics post-processing program MagMap2000 is then used to interpolate the position of each sensor between GPS readings, and export an X,Y,Z or Latitude-Longitude-Magnetometer or other recorded data file for each data input.

Maglog NT makes use of the latest multi-threading technology to ensure that critical events are not lost. For example, critical tasks maintain priority and data will be logged to disk as it comes in, even if the plotting routines were to fall behind. In addition, each sensor is logged independently of the others, so that any problem with one sensor will not affect the others.

All of this activity takes place with maximum efficiency, controlled by the scheduling and prioritizing functions of the operating system.

This means that whether you are logging 1 sensor or 20, or if some sensors are logging at 1 Hz and others at 100 Hz, the system will maintain optimal efficiency.

Other Accessories include a Video Titleler system for annotation of the Flight Path Recovery Video Camera Tape which can include GPS Position, Magnetometer or any

other recorded information, altimeters, temperature gauges and navigation systems.

Computer Platform for Airborne Applications comprises an industrial grade rack mountable Pentium III 750 running NT4.0 or Win98SE with large SCSI Hard drive, rack-mount Color LCD Monitor, special analog and serial interface boards, and built in Iomega Zip or Jazz Drive for offloading and archiving data. Typical uses include Airborne Geophysical Survey, Land Ordnance Vehicle Survey and Marine Magnetometer/Gradiometer Surveys for Geological and Search applications.



Multi-Sensor Airborne Geophysical Survey System in Equipment Rack with G-822A SuperCounter, GR-820 Gamma Ray Spectrometer and GPX-1024/256 crystal pack, RMS AADCII Airborne Compensator, Video Titleler and Position Recovery System, MagLogNT Data Logging Computer System with pop-up high resolution LCD Panel Display and power panel. Note computer keyboard drawer, stressed aluminum rack and aircraft dampened shock mounts.

**SPECIFICATIONS SUBJECT TO CHANGE WITHOUT NOTICE**

**08/00**

Ž

Brazil: phone 21 3507-7665 - [www.alphageofisica.com.br](http://www.alphageofisica.com.br) Ž

Ž Ž



