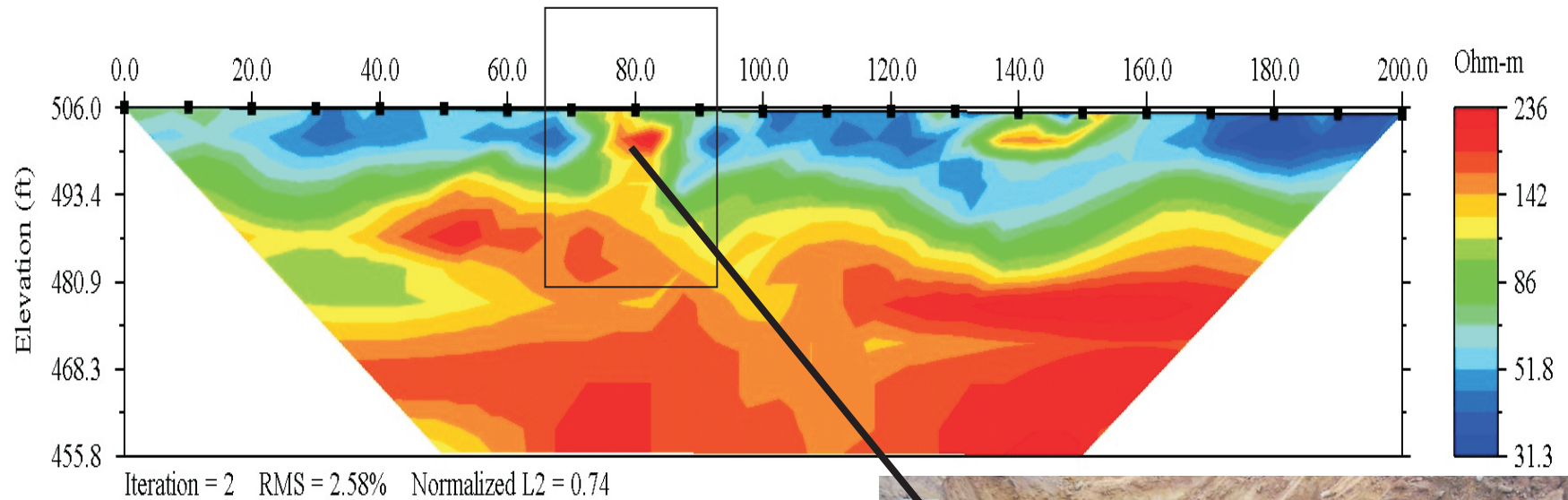
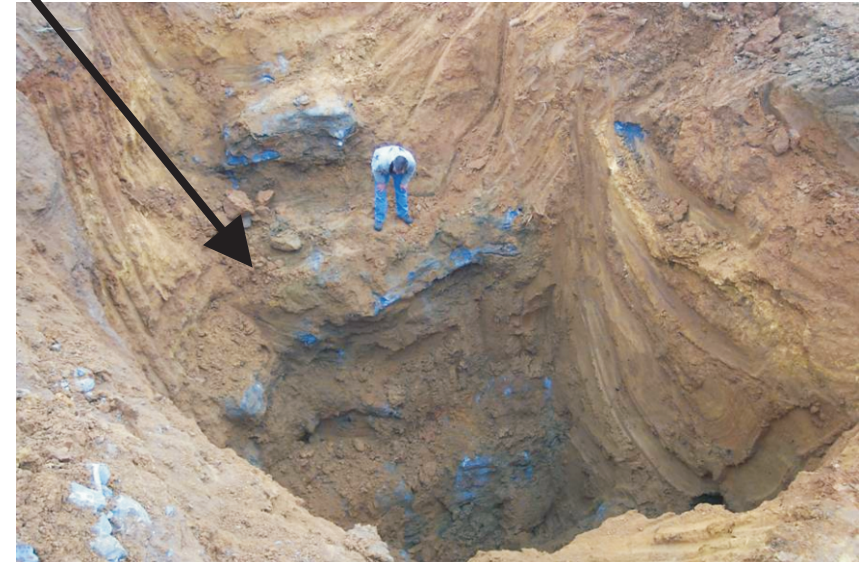


Geotechnical Survey for Karst



After collecting the profile shown above, the highlighted resistivity anomaly was excavated. The results of this excavation are seen in the picture to the right.



Objective: Geotechnical Site Survey in advance of retail building construction
Survey date: October, 2006
Survey site: Maryland, USA
Instrument: SuperSting R8/IP with 20 electrodes at 10 ft spacing
Electrode array: Dipole-dipole
Processing: Inversion of data using EarthImager 2D inversion software
Units: Feet and Ohmmeter

Data courtesy of Triad Engineering, Inc. Hagerstown, MD USA



SuperSting 8-channel Resistivity Instrument
by



Info Brazil:
 Tel.: 21 2556-1295
 Email: info@alphageofisica.com.br
 Web: <http://www.alphageofisica.com.br>